



FLOOR PLANS

# The Pinnacle

Central Milton Keynes  
MK9 1FD

# Accommodation

BUILDING	FLOOR	SQ FT	SQ M
The Pinnacle	3rd	4,748	441.1
		5,854	543.9
	2nd	12,167	1,130.3
	1st	20,630	1,916.6
		4,921	457.2
	Ground	6,656	618.3
		11,496	1,068.0
	<b>Total</b>	<b>66,472</b>	<b>6,175.4</b>

The Mews	2nd	5,425	504.0
	1st	5,262	488.9
	Ground	4,768	443.0
	<b>Total</b>	<b>15,455</b>	<b>1,435.9</b>

The Studio	Ground	2,605	242.0
	Lower Ground	3,067	284.9
	<b>Total</b>	<b>5,672</b>	<b>526.9</b>

<b>TOTAL</b>		<b>87,599</b>	<b>8,138.2</b>
--------------	--	---------------	----------------



# The Pinnacle

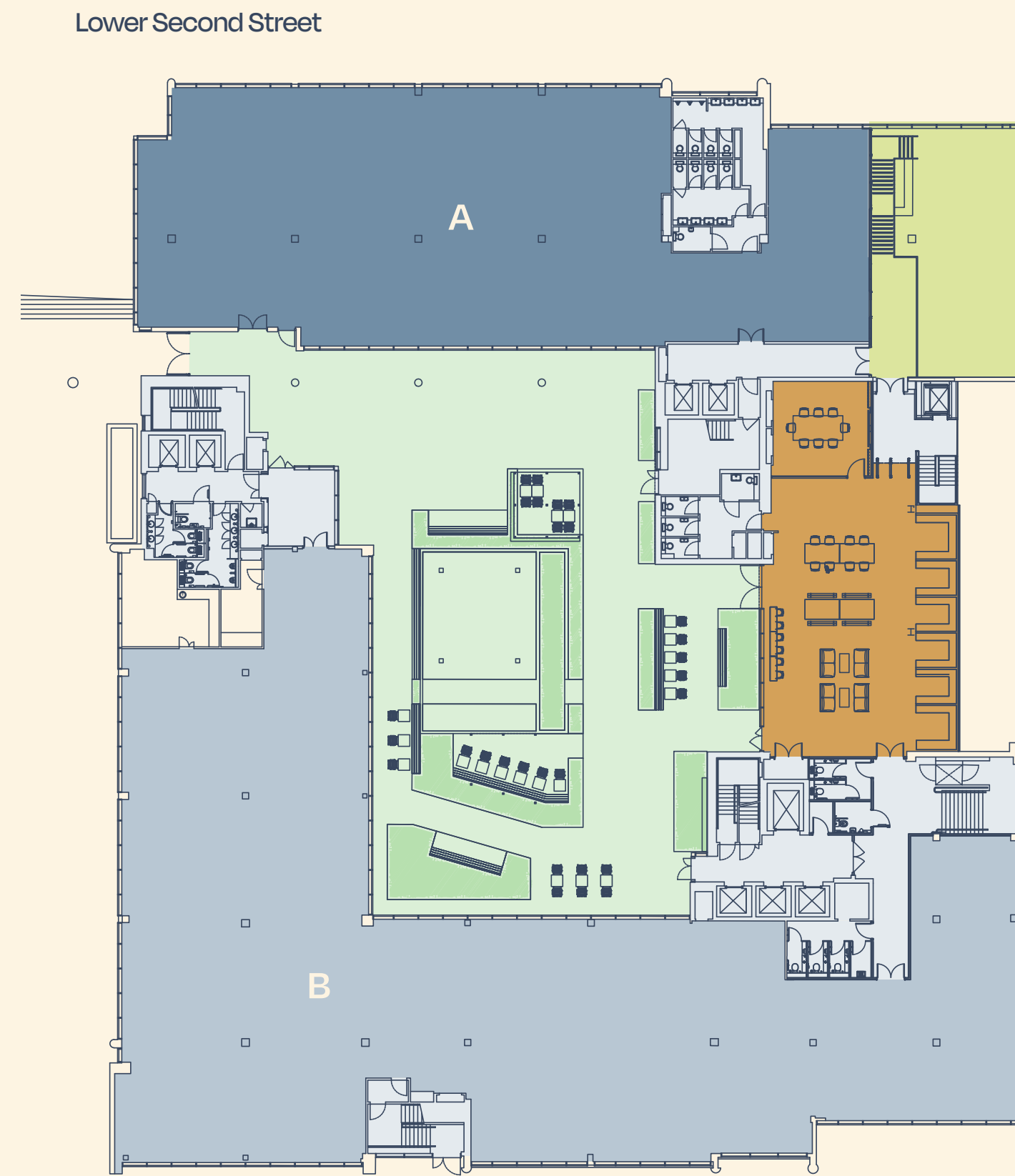
FLOOR	SQ FT	SQ M
3rd	4,748	441.1
	5,854	543.9
2nd	12,167	1,130.3
1st	20,630	1,916.6
Ground	4,921	457.2
	6,656	618.3
	11,496	1,068.0
<b>Total</b>	<b>66,472</b>	<b>6,175.4</b>



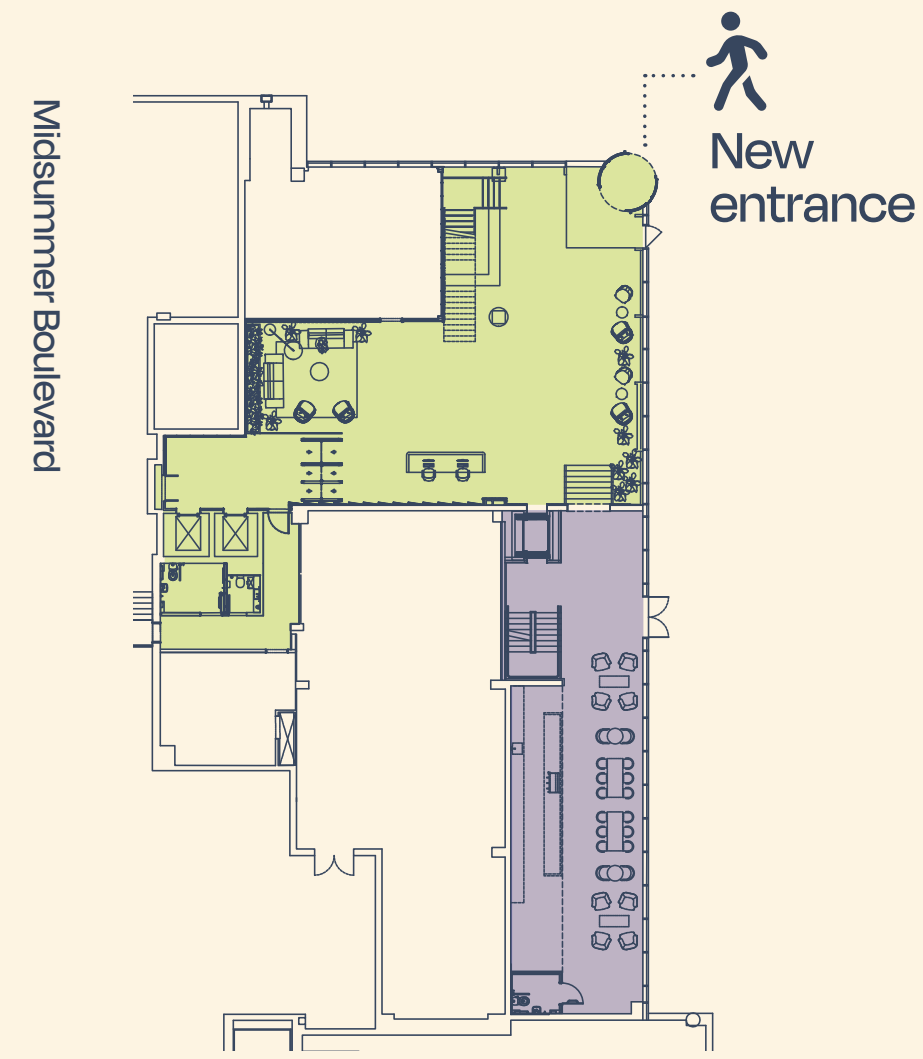


## Ground Floor

- A – 6,656 sq ft / 618.3 sq m
- B – 11,496 sq ft / 1,068.0 sq m



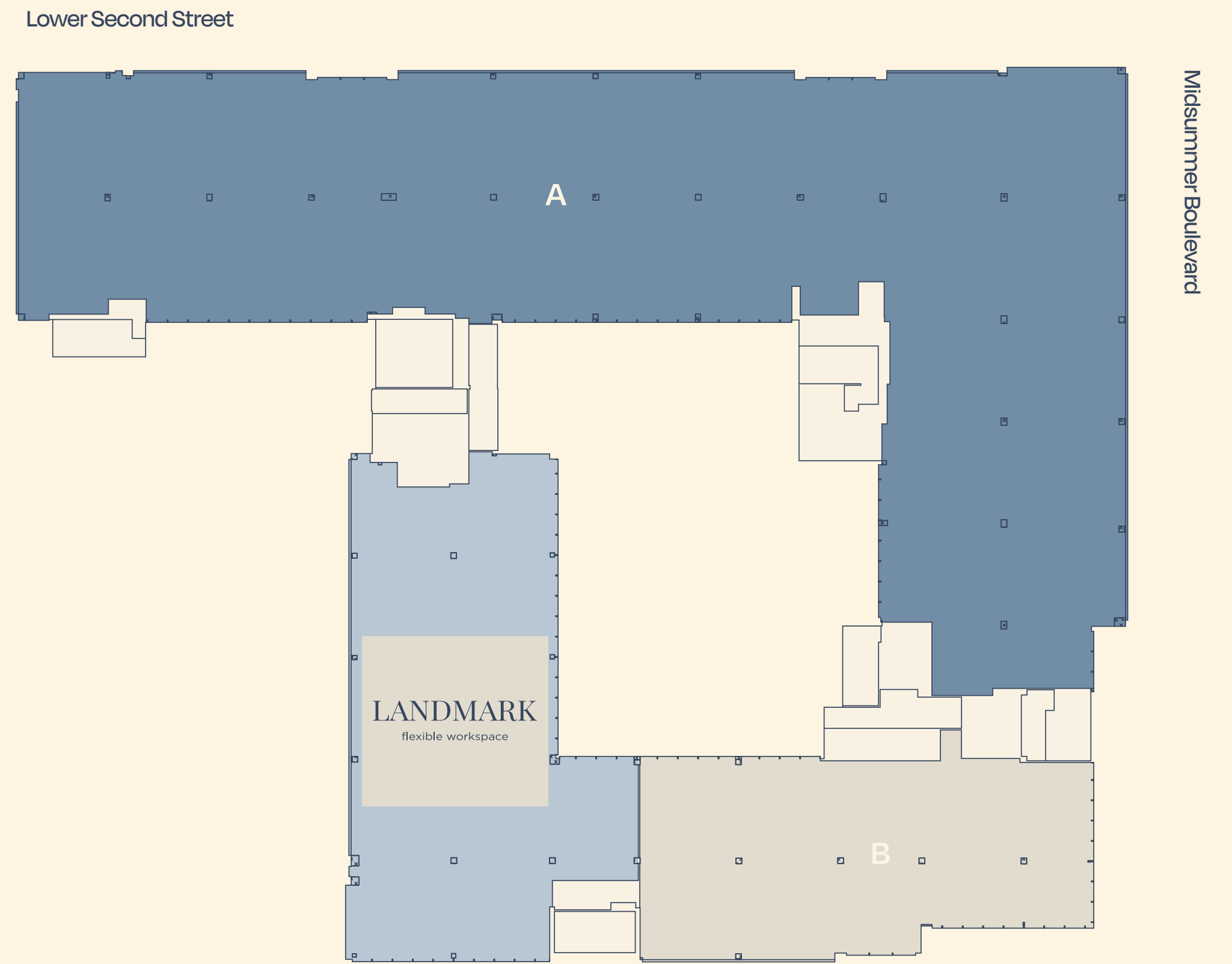
## Lower Ground Floor



- Reception
- Business Lounge
- Café
- Courtyard
- Core
- Let

## 1st Floor

- A – 20,630 sq ft / 1,916.6 sq m
- B – 4,921 sq ft / 457.2 sq m



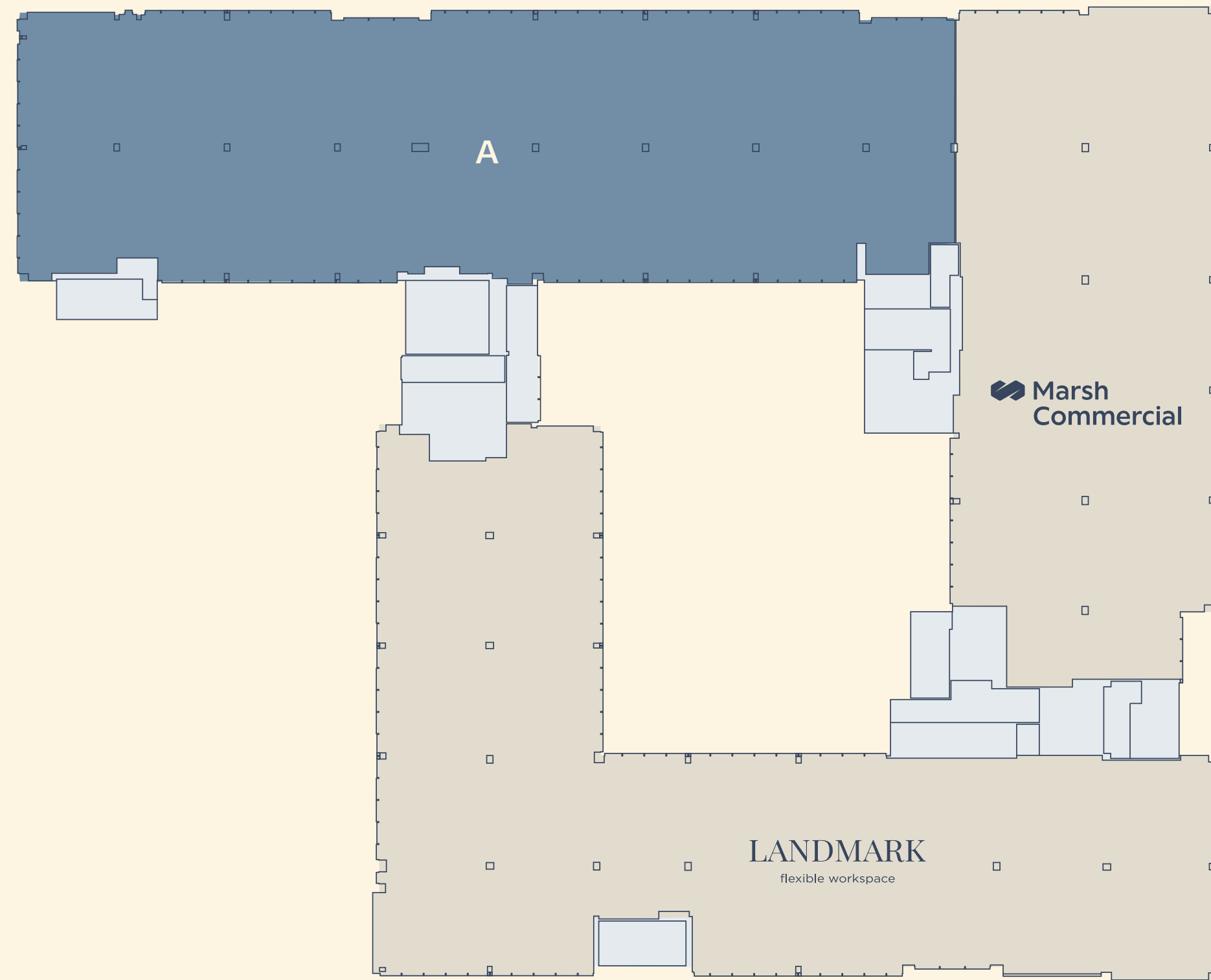
For indicative purposes only. Not to scale.



## 2nd Floor

● A – 12,167 sq ft / 1,130.3 sq m

Lower Second Street



Midsommer Boulevard

- Core
- Let

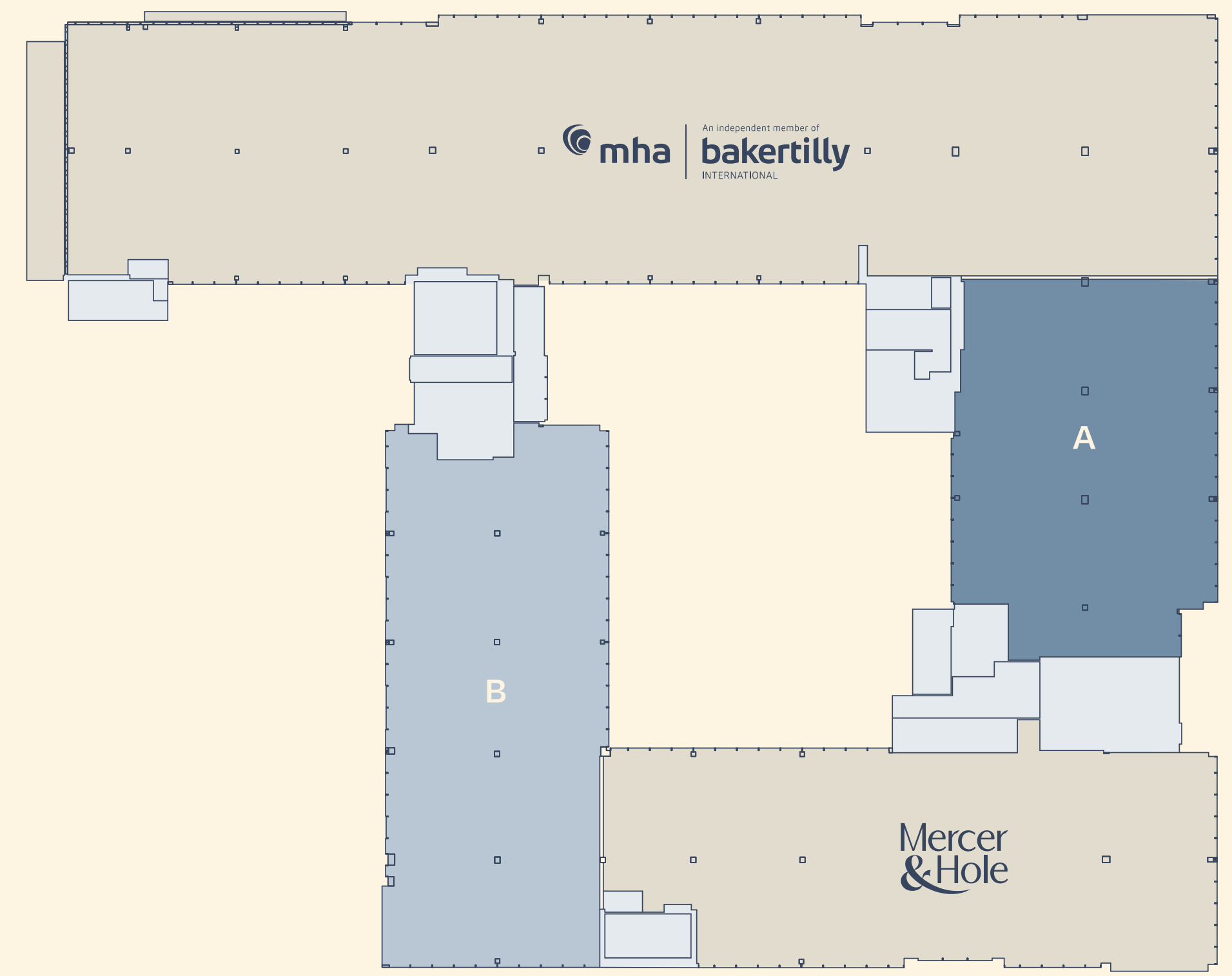
For indicative purposes only. Not to scale.

## 3rd Floor

● A – 4,748 sq ft / 441.1 sq m

● B – 5,854 sq ft / 543.9 sq m

Lower Second Street



Midsommer Boulevard

The Mews

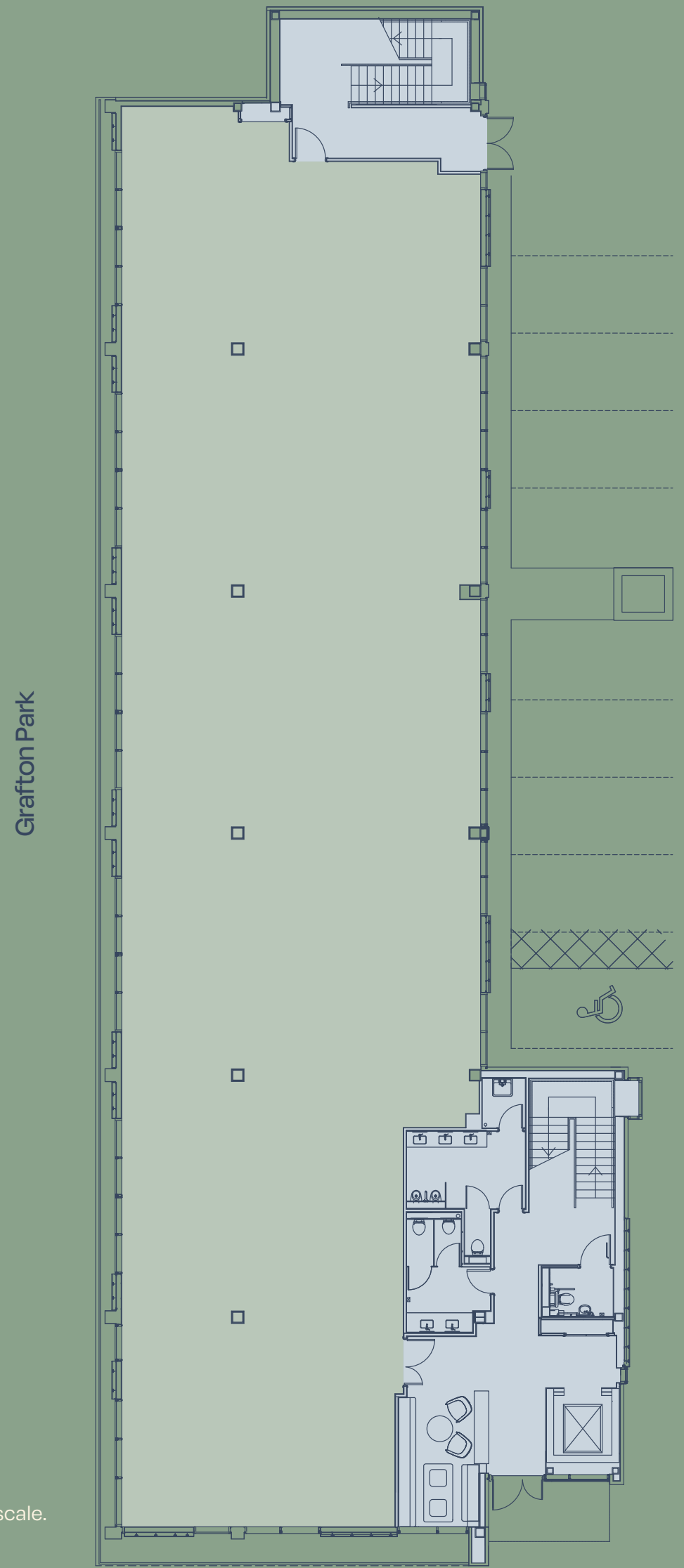
FLOOR	SQ FT	SQ M
2nd	5,425	504.0
1st	5,262	488.9
Ground	4,768	443.0
<b>Total</b>	<b>15,455</b>	<b>1,435.9</b>





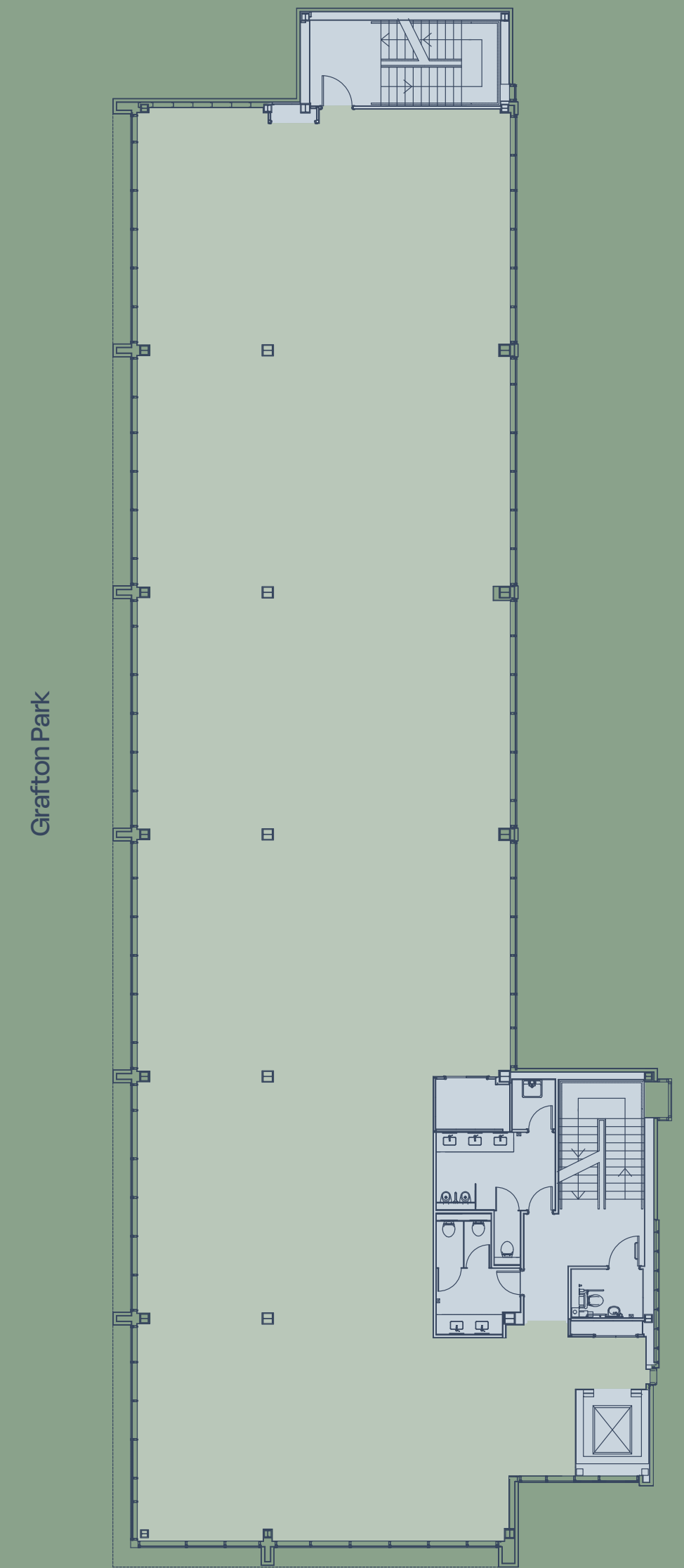
### Ground Floor

4,768 sq ft /  
443.0 sq m



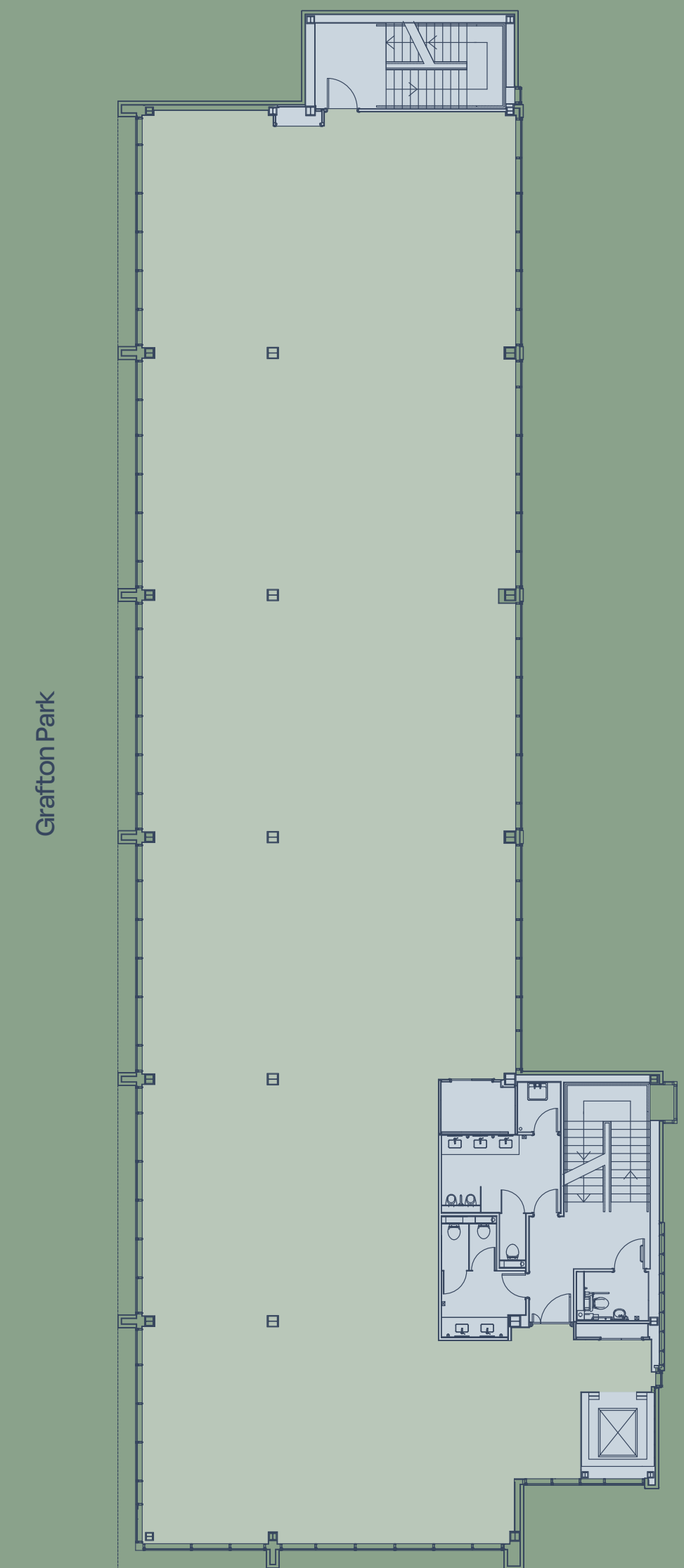
### First Floor

5,262 sq ft /  
488.9 sq m



### Second Floor

5,425 sq ft /  
504.0 sq m



● Core

For indicative purposes only. Not to scale.

## The Studio

FLOOR	SQ FT	SQ M
Ground	2,605	242
Lower Ground	3,067	284.9
<b>Total</b>	<b>5,672</b>	<b>526.9</b>



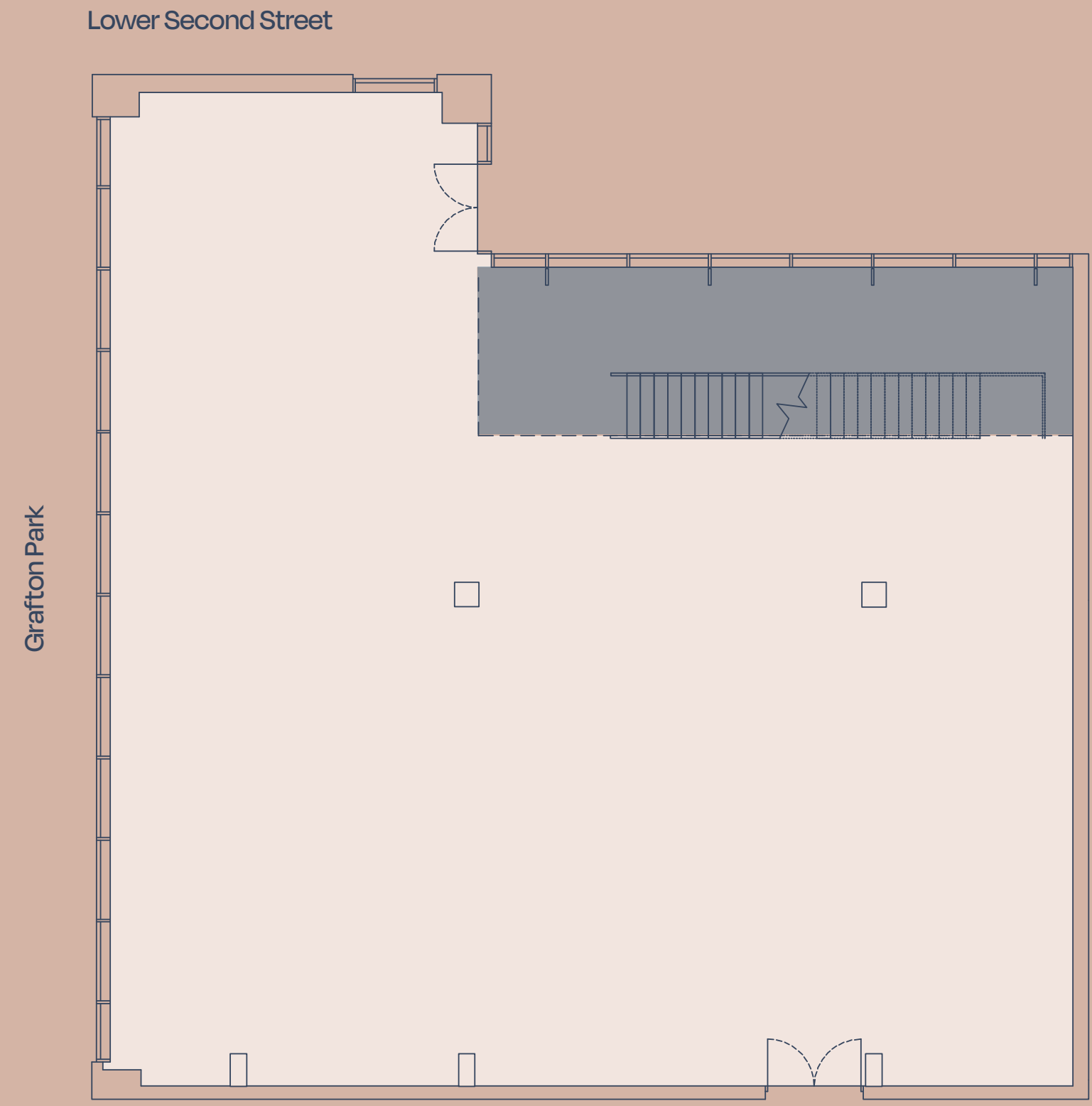
The Studio





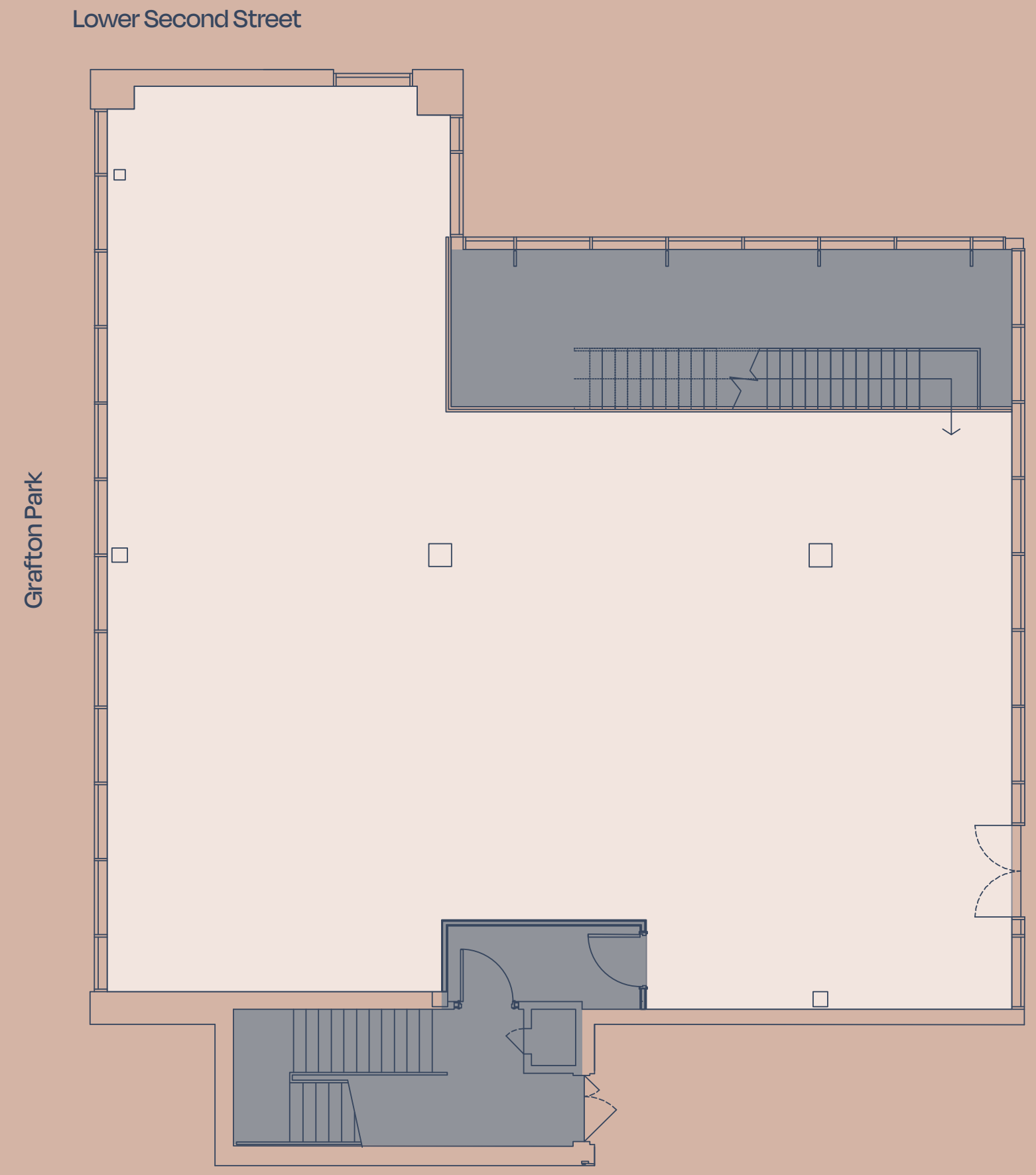
### Lower Ground Floor

3,067 sq ft /  
284.9 sq m



### Ground Floor

2,605 sq ft /  
242.0 sq m



For indicative purposes only. Not to scale.

# Further Information

## Viewings

Please contact the joint letting agents.



### Ian Leather

07860 612 242

ianleather@brayfoxsmith.com

### Joss Burrows

07342 341 727

jossburrows@brayfoxsmith.com

## Terms

Upon application.



### Matt Willcock

07920 117 257

matt.willcock@cbre.com

### Rebecca Hewitt

07909 162 473

rebecca.hewitt@cbre.com

### Jeremy Rodale

07766 780 590

jeremy.rodale@cbre.com

150 Midsummer Boulevard, Milton Keynes MK9 1FD

#### Disclaimer

CBRE & Bray Fox Smith or themselves and for the vendors or lessors of this property, whose agents they are, give notice that: (i) the particulars are set out as a general outline only, for the guidance of intending purchasers or lessees and do not constitute, nor constitute part of, an offer or contract; (ii) all descriptions, dimensions, references to condition, necessary permissions for use and occupation and other details are given without responsibility and any intending purchasers or tenants should not rely on them as statements or representations of fact, but must satisfy themselves by inspection or otherwise as to the correctness of each of them; (iii) no person in the employment of CBRE & Bray Fox Smith has any authority to make or give any representation or warranty whatever in relation to the property; (iv) rents quoted in the above particulars may be subject to VAT in addition. November 2024.